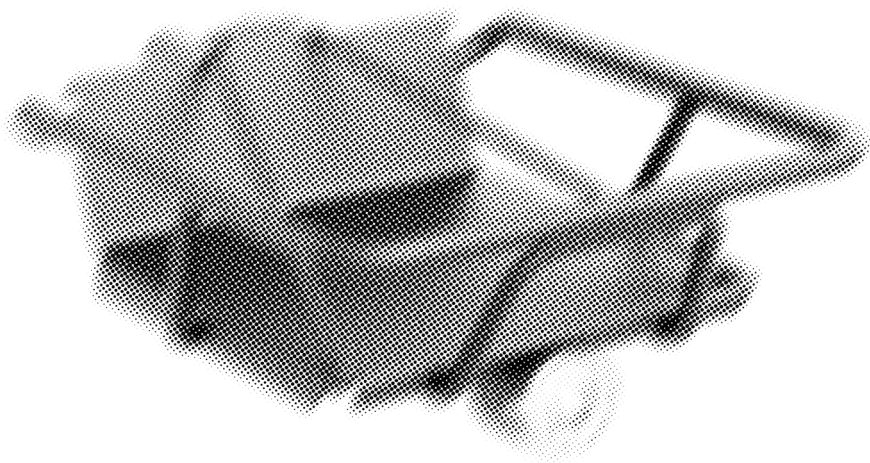


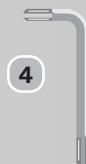
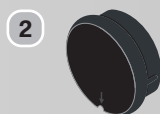
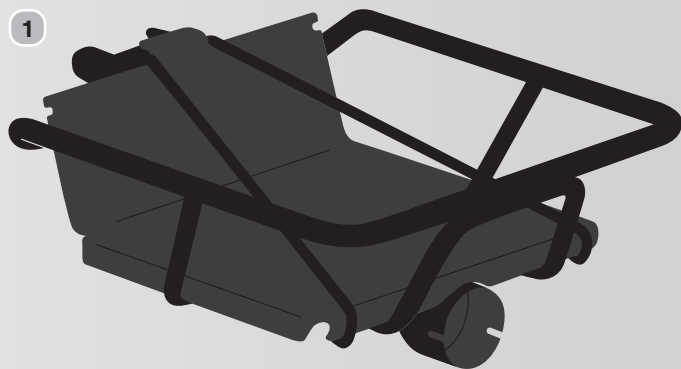
User Manual

5 & 6 Series Front Rack





In the box



1 Front Rack

2 Rubber light cover

3 Socket head screws (12 mm / x3)

4 Torx Key N°10



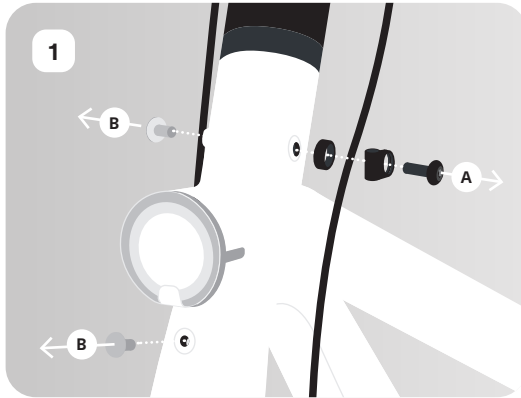
You will also need:

Allen Key N°5

(from your VanMoof bike toolbox)

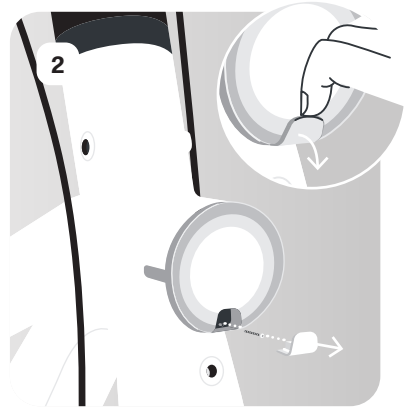


Instructions



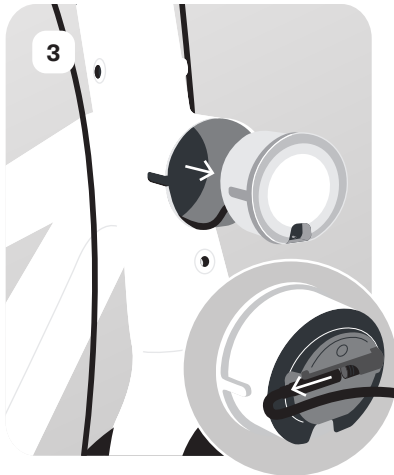
↑ A. Unscrew the cable holder using Allen key N°5, then remove the spacer and holder from the brake cable.

B. Remove the two head tube rubber caps.

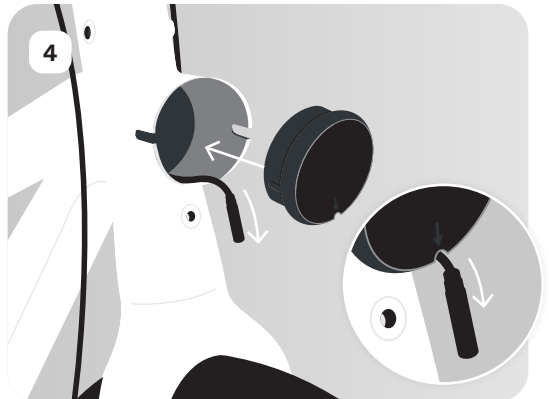


↑ Push down and remove the small plastic lens under the front light.

Remove the screw using the Torx key N°10.



↑ Wiggle the front light out and unplug the connector from behind the light.



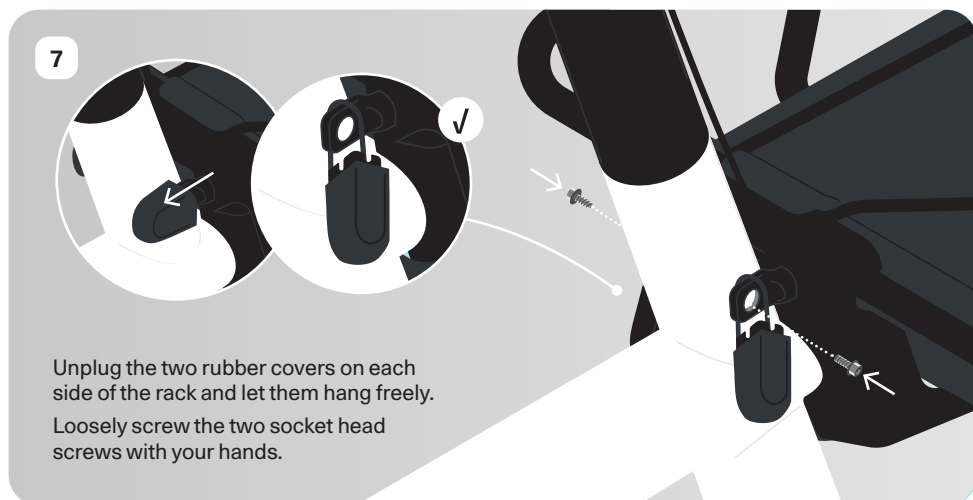
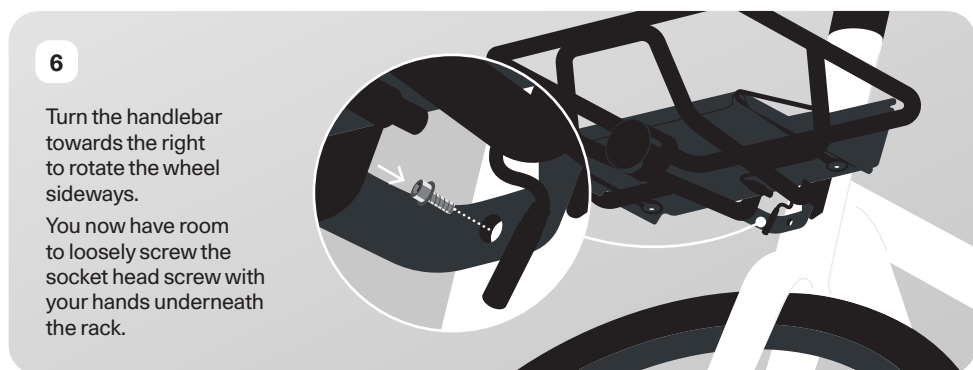
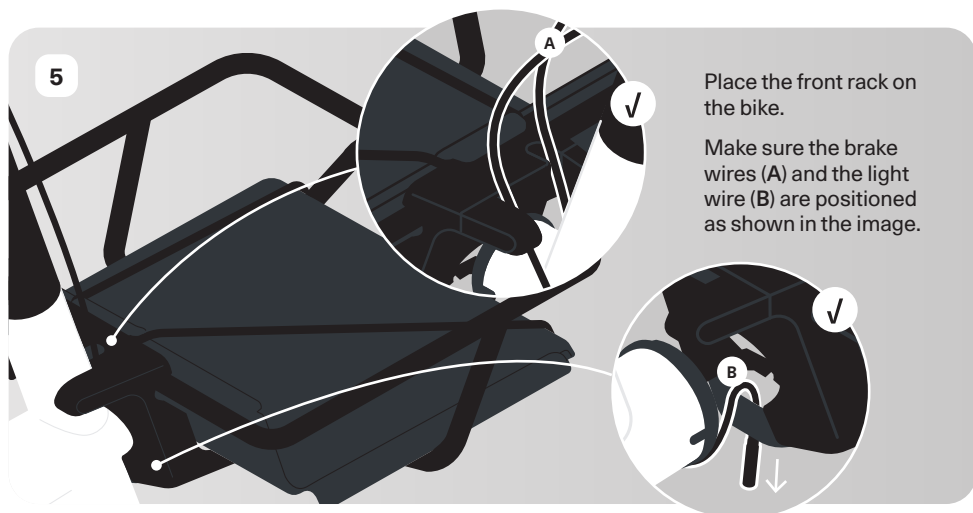
↑ Gently pull on the front light wire until it can't be pulled anymore.

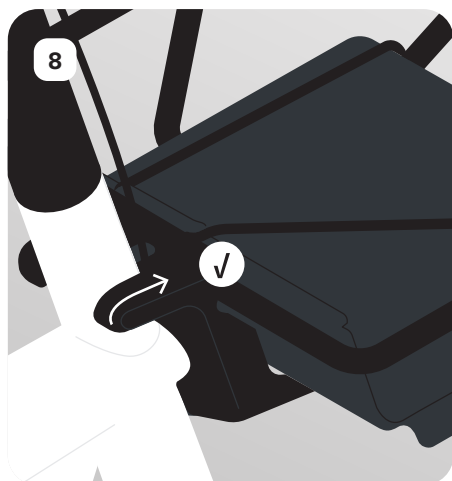
Install the rubber light cover where the front light was.

➤ Make sure the arrow is pointing down and that the light wire is outside of the cap.



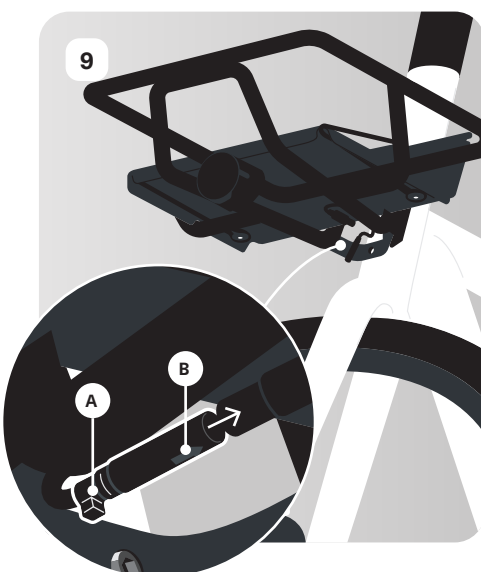
Set aside the screw, front light, and plastic lens for the final step.





↑ Ensure all three screws are properly aligned, then fully tighten them with the Allen key N°5. Put the two rubber covers back to cover the top screws.

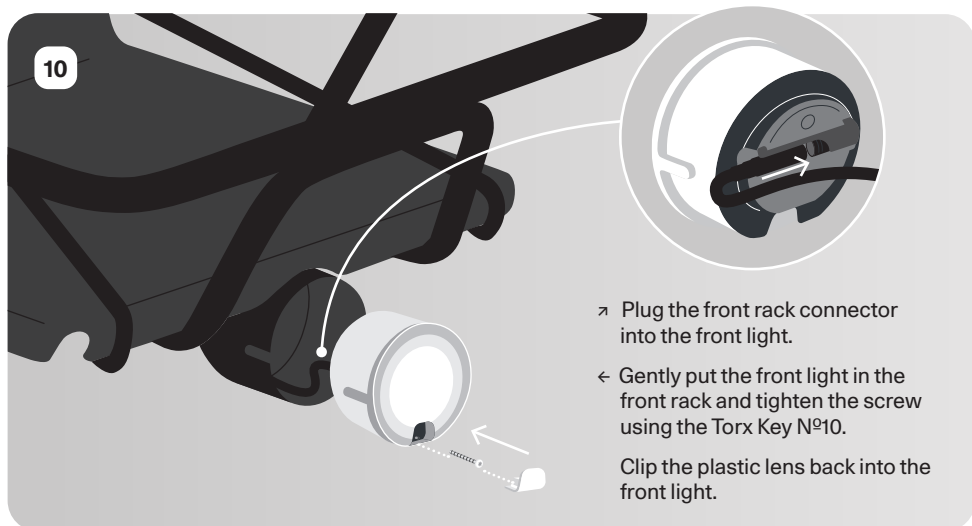
i The recommended torque is 8 Nm.



➤ Plug in the front light cable connector to the connector underneath the front rack.

Make sure the small plastic block (A) and arrow (B) on the wire are facing downwards.

Grab the the screw, front light, and plastic lens you put aside on the last page.



➤ Plug the front rack connector into the front light.

← Gently put the front light in the front rack and tighten the screw using the Torx Key N°10.

Clip the plastic lens back into the front light.

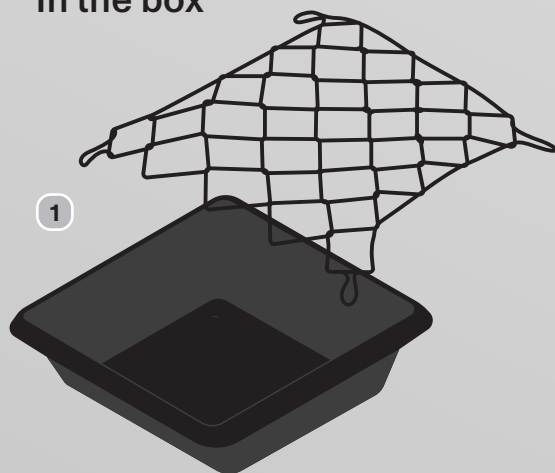
Front Rack Basket Combo

Optional Step: This step is only for customers who have purchased the "5 & 6 Series Front Rack Basket Combo."

Follow these instructions to attach the basket combo to your 5 & 6 Series Front Rack. The basket is compatible with this rack and is designed to be installed at this point in the process.



In the box



- 1 Basket + Net
- 2 Ball knob screws + Washers (x2)
- 3 Allen Key N°2.5
- 4 Nuts (x4)
- 5 Button head screws + Washers (16 mm / x4)

2



3



4



5



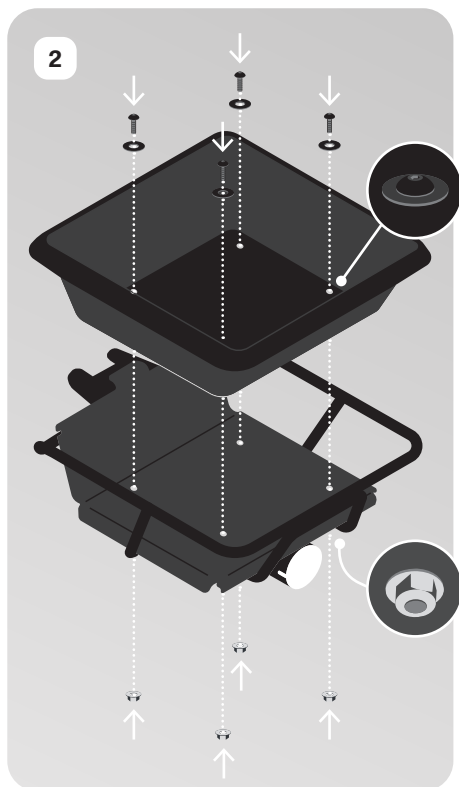
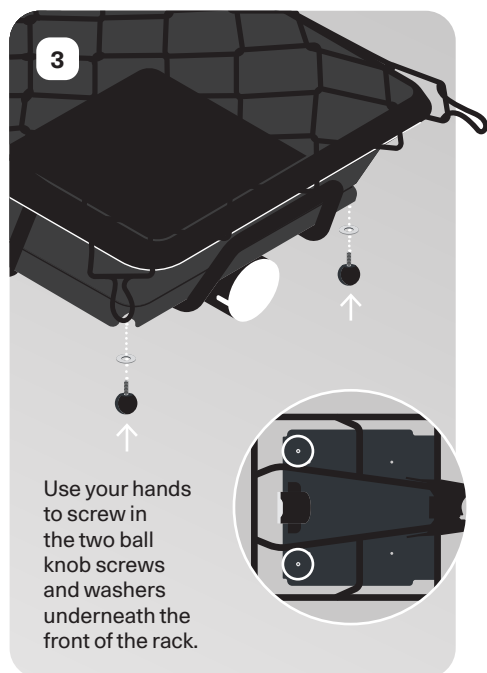
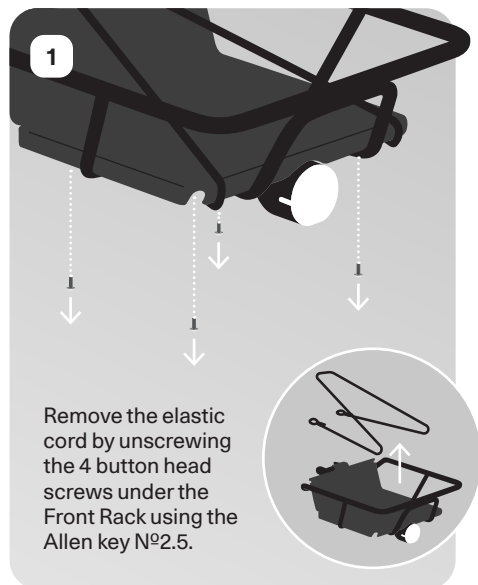
+

You will also need:

Allen Key N°3

(from your VanMoof bike toolbox)

Instructions



↑ Place the basket into the front rack.

Put the four button head screws into the washers, and insert them into the holes at the top of the basket.

Tighten the four nuts underneath by hand, while using Allen key N°3 to tighten the screws on top. Hold the nuts by hand while making sure the screws are fully tightened.



✓

The net should always be attached to the ball knobs to prevent it from getting caught in the front wheel.

Specifications:

- Aluminium with Polycarbonate construction.
- Polypropylene basket (optional)
- Designed to carry up to 10 Kg.
- The 5 & 6 Series Front Rack is compatible with VanMoof A5, S5, S6, and S6 Open
- The basket is compatible with the 5 & 6 Series Front Rack

**IMPORTANT SAFETY INSTRUCTIONS**

Read and follow all product instructions and warnings, including the installation and care manual for this Read and follow all product instructions and warnings including information on the rider manual.

- 1. WARNING:** The maximum load capacity is 10 Kg. Do not exceed the load capacity.
- 2. WARNING:** Not compatible with child seats.
- 3. WARNING:** Do not exceed the bicycle manufacturer's permissible load.
- 4. WARNING:** Check with your bicycle's manufacturer to verify proper fit, mounting points, bicycle cargo load capacity, and compatibility for carrying cargo.
- 5. WARNING:** Do not modify the front rack or basket in any way.
- 6. WARNING:** The bicycle may behave differently (particularly with regard to steering and braking) when the front basket is loaded.
- 7. WARNING:** Position reflectors and lights so that they are not obstructed when the rack or basket is loaded.
- 8. WARNING:** Make sure your load is evenly balanced and secure before every ride (i.e. no loose straps to get caught in the wheels)
- 9. WARNING:** Do not carry pets or children in the front basket. It may lead to serious injury.

FAILURE TO COMPLY WITH THESE WARNINGS MAY LEAD TO SERIOUS INJURY OR DEATH.

Ongoing Maintenance:

Improper installation of screws may lead to product failure, causing serious injury. Do not exceed specified torque values. Periodically inspect screws and retighten if required.

Frequently check to make sure that all the carrier hardware is properly torqued per these instructions. Check to make sure that the carrier mounting screws are properly tightened and secure the VanMoof Rear Rack to the bicycle frame. Periodically check for any signs of cracking or failure and discontinue use if the rack is damaged.

Warranty:

To view the warranty for this product, please visit our website at help.vanmoof.com

VANMOOF

