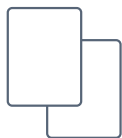
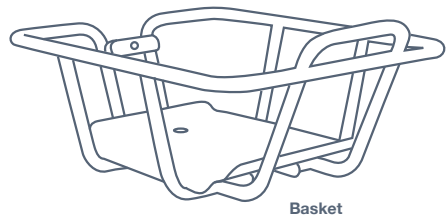


Front basket for X3 - Assembly manual

Parts and tools



Two sheets of rubber



Allen key #3 & #4
(#3 is included in the tool-box that comes with your S3 or X3)



M5 bolt x 20mm (2x)



M5 bolt x 14mm

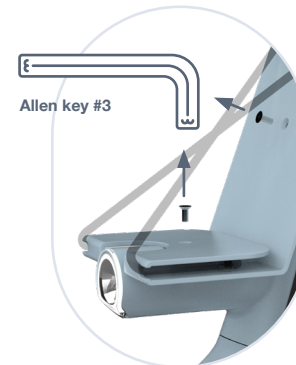


Washers (3x)

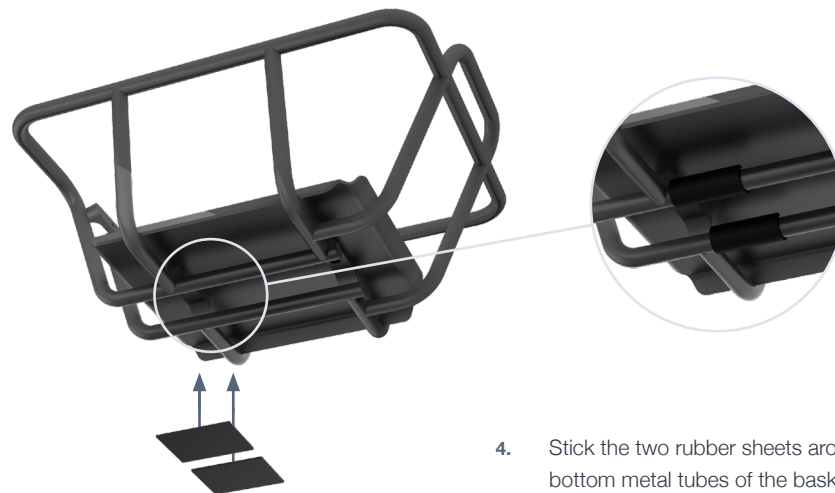
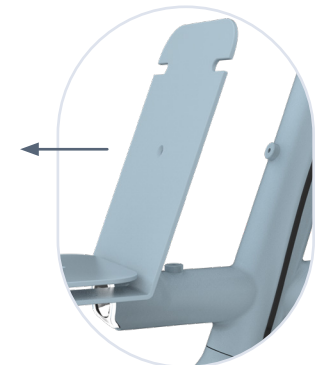
1. First, loosen the M5 bolt of the cable guide that is located on the rear side of the metal front plate using the Allen key #3.



2. Unscrew the two M5 bolts that mount the metal front plate with the frame using Allen key #3.



3. Remove the metal front plate.

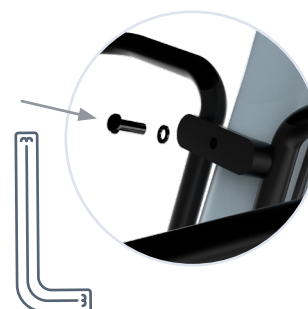


4. Stick the two rubber sheets around the bottom metal tubes of the basket.

5. Place the basket on the frame.



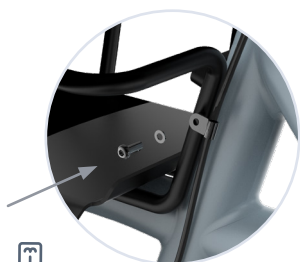
6. Tighten the basket to the bike frame by placing the two M5 x 20mm bolts, using Allen key #4. Make sure to include the washers.



Allen key #4



7. Mount the M5 x 14mm bolt through the cable guide on the basket using Allen key #4.



Allen key #4

