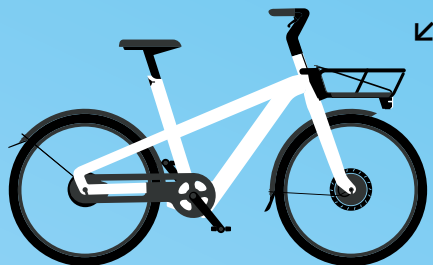
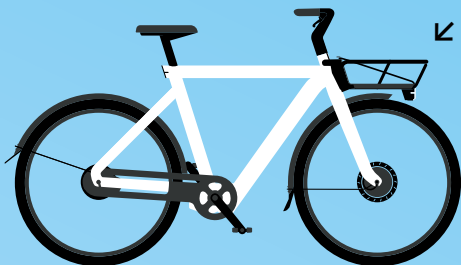
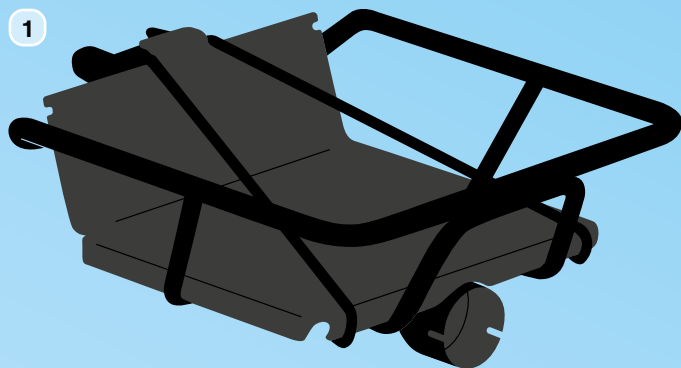


# Front Rack

Compatible with VanMoof S5 and A5. Please read this guide carefully.



## In the box



1 Front Rack

2 Rubber light cover

3 Socket head screws (12 mm / x3)

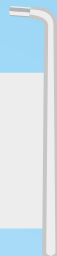
4 Torx Key N°10



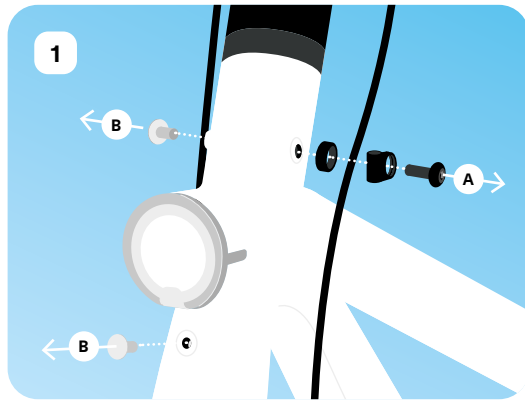
You will also need:

Allen Key N°5

(from your VanMoof bike toolbox)



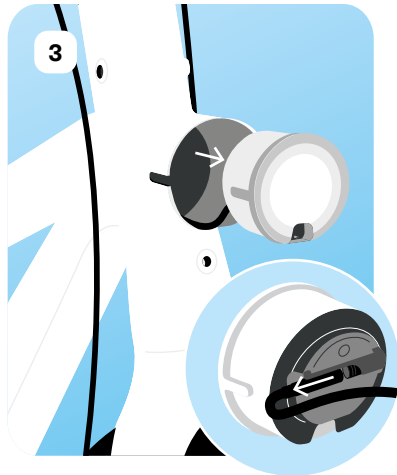
# Instructions



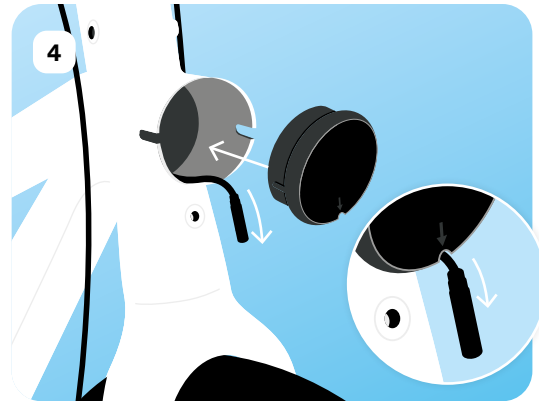
- ↑ A. Unscrew the cable holder using Allen key N°5, then remove the spacer and holder from the brake cable.  
B. Remove the two head tube rubber caps.



- ↑ Push down and remove the small plastic lens under the front light. Remove the screw using the Torx key N°10.



- ↑ Wiggle the front light out and unplug the connector from behind the light.



- ↑ Gently pull on the front light wire until it can't be pulled anymore.  
Install the rubber light cover where the front light was.  
➤ Make sure the arrow is pointing down and that the light wire is outside of the cap.

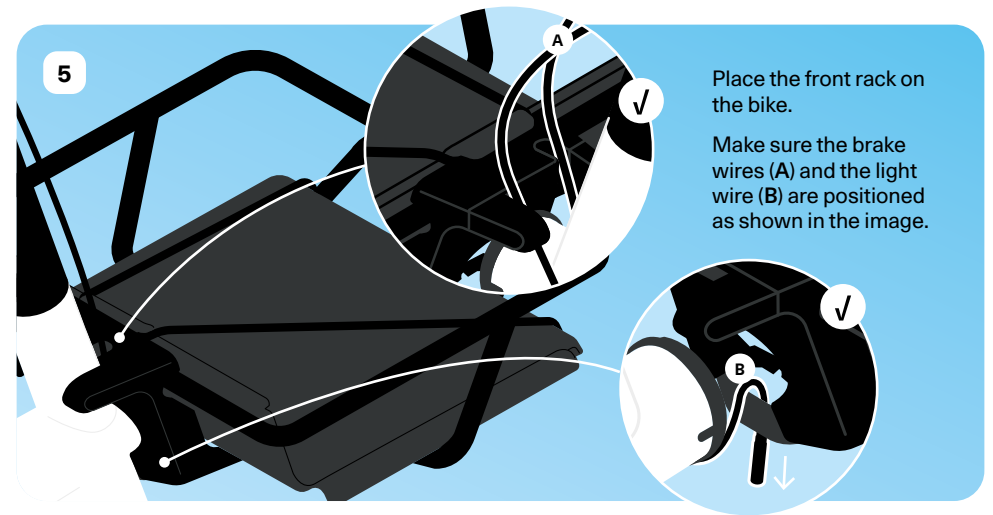
i



REFERENCE

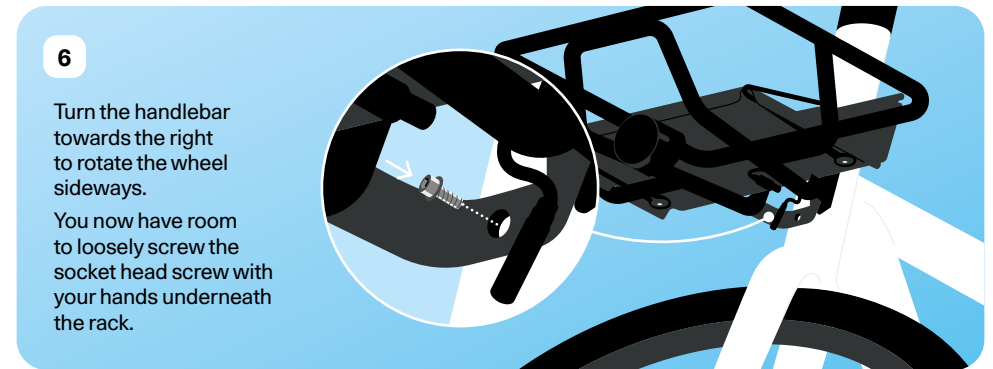


Set aside the screw, front light, and plastic lens for the final step.



Place the front rack on the bike.

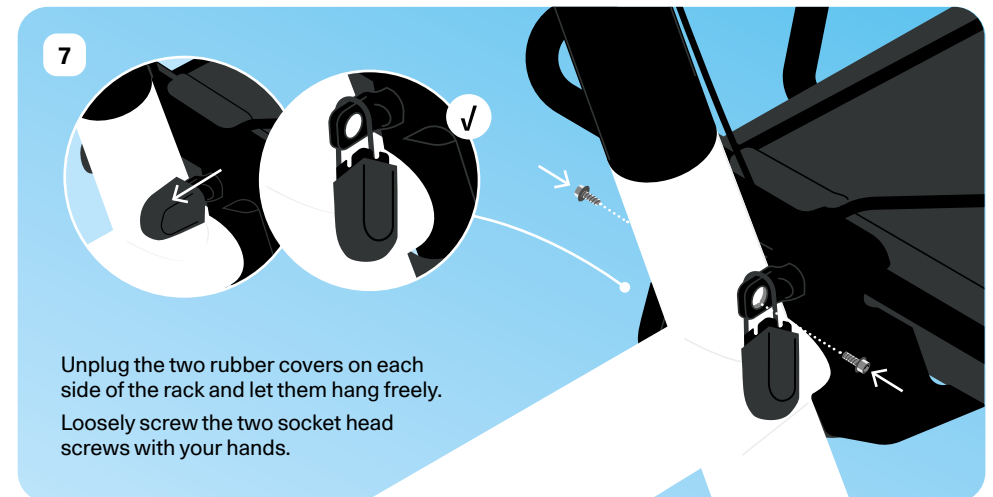
Make sure the brake wires (A) and the light wire (B) are positioned as shown in the image.



6

Turn the handlebar towards the right to rotate the wheel sideways.

You now have room to loosely screw the socket head screw with your hands underneath the rack.



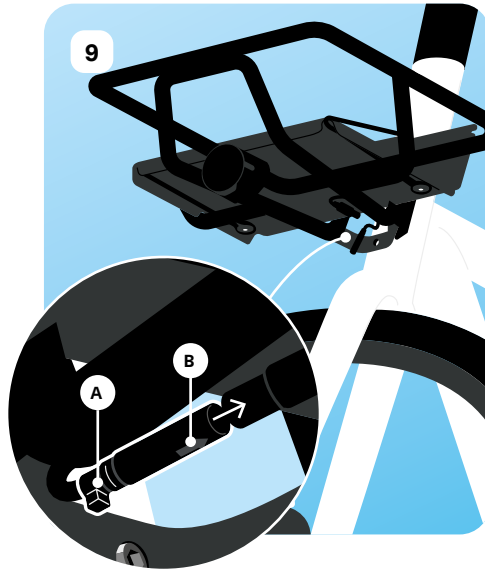
7

Unplug the two rubber covers on each side of the rack and let them hang freely. Loosely screw the two socket head screws with your hands.



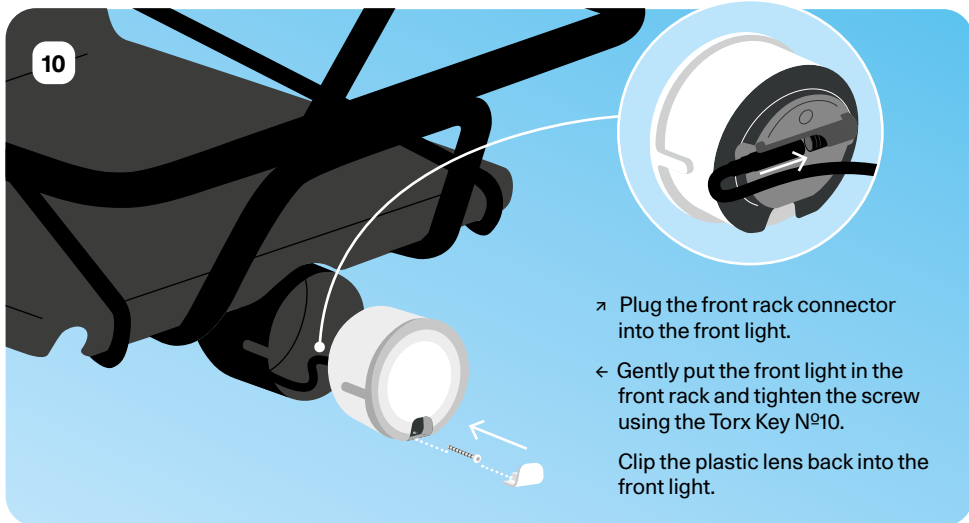
↑ Ensure all three screws are properly aligned, then fully tighten them with the Allen key N°5. Put the two rubber covers back to cover the top screws.

**i** The recommended torque is 8 Nm.



➤ Plug in the front light cable connector to the connector underneath the front rack. Make sure the small plastic block (A) and arrow (B) on the wire are facing downwards.

Grab the the screw, front light, and plastic lens you put aside on the last page.

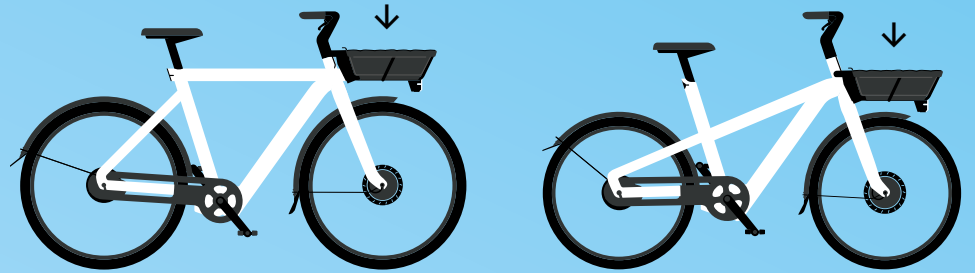


➤ Plug the front rack connector into the front light.  
 ← Gently put the front light in the front rack and tighten the screw using the Torx Key N°10.  
 Clip the plastic lens back into the front light.

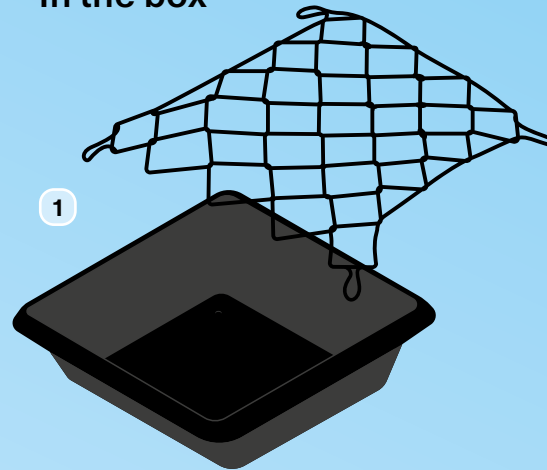
## Optional

# Basket + Net

Compatible with the Front Rack for VanMoof S5 and A5.  
 Please read this guide carefully.



## In the box

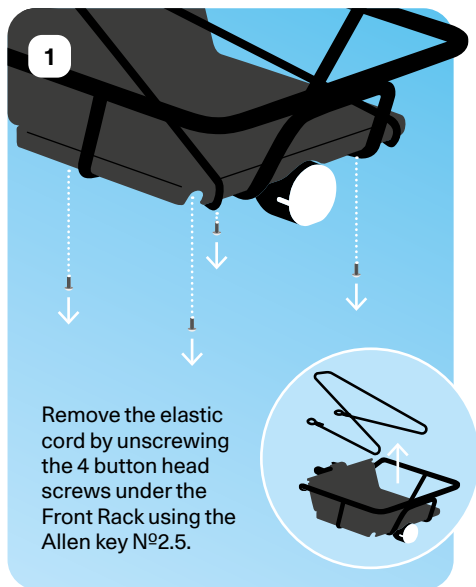


- 1 Basket + Net
- 2 Ball knob screws + Washers (x2)
- 3 Allen Key N°2.5
- 4 Nuts (x4)
- 5 Button head screws + Washers (16 mm / x4)

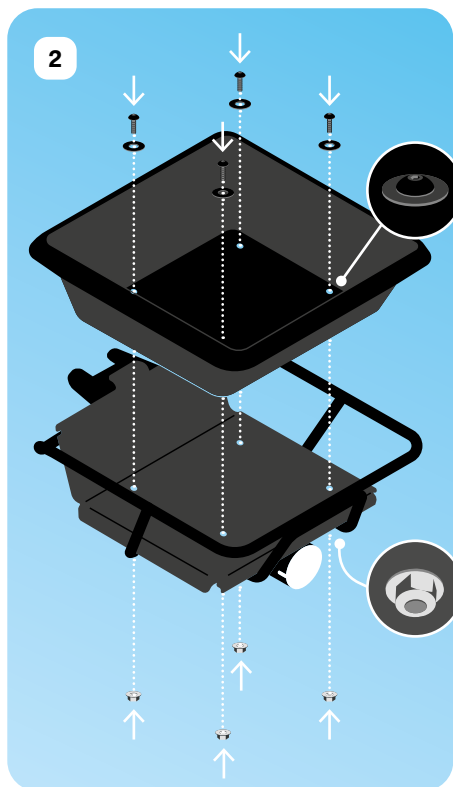


**+** You will also need:  
 Allen Key N°3  
 (from your VanMoof bike toolbox)

# Instructions



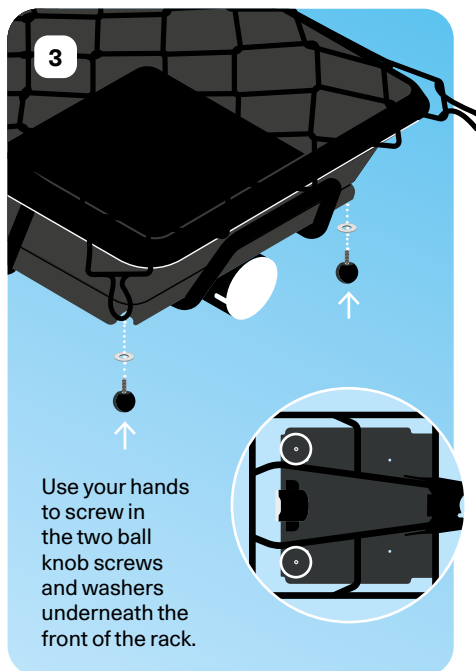
1  
Remove the elastic cord by unscrewing the 4 button head screws under the Front Rack using the Allen key N°2.5.



2  
↑ Place the basket into the front rack.

Put the four button head screws into the washers, and insert them into the holes at the top of the basket.

Tighten the four nuts underneath by hand, while using Allen key N°3 to tighten the screws on top. Hold the nuts by hand while making sure the screws are fully tightened.



3  
Use your hands to screw in the two ball knob screws and washers underneath the front of the rack.



✓

The net should always be attached to the ball knobs to prevent it from getting caught in the front wheel.

## WARRANTY USA

**Warranty term and what is covered:** VanMoof guarantees each new VanMoof bicycle frame and new VanMoof accessory against structural defects in workmanship and materials for a period of three years from the date of delivery. This limited warranty is expressly limited to the replacement of a defective frame, defective product or defective parts, and is the consumer's sole remedy. A repair or replacement under a warranty does not extend the warranty period. This warranty does not affect any statutory rights of the consumer.

**What is not covered:** This limited warranty does not cover normal wear and tear, improper assembly, improper follow-up maintenance, or installation of parts or accessories by anyone other than a certified VanMoof bike specialist, without VanMoof's explicit instructions. The warranty does not apply to damage or failure due to accident, misuse, abuse, neglect, corrosion, or failure to perform maintenance or service at appropriate intervals as specified in the written instructions provided with the product, the VanMoof application, or at [www.vanmoof.com](http://www.vanmoof.com). Modification of the frame or components shall void this warranty.

**How to make a claim:** Claims under this limited warranty must be made directly to your point of purchase. For online purchases, please contact us at +1 (855) 808 1100/usa@vanmoof.com or by logging in to your account. Original proof of purchase is required. We advise that you keep the product box, as a fee will be charged for replacement boxes.

### Disclaimer

THIS IS A FULL AND COMPLETE STATEMENT OF VANMOOF'S WARRANTY FOR THE PRODUCT. VANMOOF MAKES NO ADDITIONAL REPRESENTATIONS OR WARRANTIES WITH RESPECT TO THE PRODUCT. VANMOOF DISCLAIMS ALL OTHER EXPRESS AND IMPLIED WARRANTIES, INCLUDING BUT NOT LIMITED TO IMPLIED WARRANTIES OF FITNESS FOR A PARTICULAR PURPOSE, MERCHANTABILITY, AND, TO THE FULLEST EXTENT PERMITTED BY LAW, ALL IMPLIED WARRANTIES PROVIDED BY STATUTE OR COMMON LAW. VANMOOF'S LIABILITY UNDER THIS WARRANTY SHALL BE NO GREATER THAN THE AMOUNT OF THE ORIGINAL PURCHASE PRICE. UNDER NO CIRCUMSTANCES, INCLUDING, BUT NOT LIMITED TO NEGLIGENCE, SHALL VANMOOF OR ANY VANMOOF DISTRIBUTOR/SELLER BE LIABLE FOR ANY DAMAGES, INCLUDING BUT NOT LIMITED TO INCIDENTAL OR CONSEQUENTIAL DAMAGES OR LOSSES, THAT RESULT FROM THE USE OF OR THE INABILITY TO USE THE VANMOOF BIKE AND/OR ANY OTHER PRODUCTS OR MATERIALS REFERRED TO IN THIS MANUAL. APPLICABLE LAW MAY NOT ALLOW THE LIMITATION OR EXCLUSION OF LIABILITY OR CONSEQUENTIAL DAMAGES SO THE ABOVE LIMITATION OR EXCLUSION MAY NOT APPLY TO YOU.

## WARRANTY EU (excl. DE) - UK - ASIA

VanMoof guarantees each new VanMoof bicycle frame and new VanMoof accessory against defects in workmanship and materials for three years. All original components are guaranteed for a period of three years from the date of delivery. This warranty is expressly limited to the replacement of a defective frame, defective product, or defective parts and is the consumer's sole remedy. A repair or replacement under a warranty does not extend the warranty period. Claims under this warranty must be made directly to your point of purchase in your country. Proof of purchase is required. We advise you to keep your box, since replacement boxes are not covered by the warranty. If you need a replacement box, we'll send you one for an additional fee.

This warranty does not cover normal wear and tear, improper assembly or follow-up maintenance, or installation of parts or accessories. The warranty does not apply to damage or failure due to accident, misuse, abuse, neglect, corrosion, or failure to perform maintenance or service at appropriate intervals as specified in the written instructions provided with the product, the VanMoof application, or at [www.vanmoof.com](http://www.vanmoof.com). Modification of the frame or components shall void this warranty. VanMoof is not responsible for incidental or consequential damages. This warranty does not affect any statutory rights of the consumer.

### Disclaimer

Under no circumstances, including, but not limited to negligence, shall VanMoof or any VanMoof distributor (seller) be liable for any damages, including but not limited to special or consequential damages that result from the use of, or the inability to use, the VanMoof bike and/or any other products or materials referred to in this manual, even if VanMoof has been advised of the possibility of such damages. This disclaimer does not affect the statutory rights of the consumer.

## ⚠ WARNINGS

**Read and follow all product instructions and warnings including information on the rider manual.**

- 1. WARNING:** The maximum load capacity is 10 Kg. Do not exceed the load capacity.
- 2. WARNING:** Not compatible with child seats.
- 3. WARNING:** Do not exceed the bicycle manufacturer's permissible load.
- 4. WARNING:** Check with your bicycle's manufacturer to verify proper fit, mounting points, bicycle cargo load capacity, and compatibility for carrying cargo.
- 5. WARNING:** Do not modify the front rack or basket in any way.
- 6. WARNING:** The bicycle may behave differently (particularly with regard to steering and braking) when the front basket is loaded.
- 7. WARNING:** Position reflectors and lights so that they are not obstructed when the rack or basket is loaded.
- 8. WARNING:** Make sure your load is evenly balanced and secure before every ride (i.e. no loose straps to get caught in the wheels)
- 9. WARNING:** Do not carry pets or children in the front basket. It may lead to serious injury.

**FAILURE TO COMPLY WITH THESE WARNINGS MAY LEAD TO SERIOUS INJURY OR DEATH.**

### Ongoing Maintenance:

Improper installation of screws may lead to product failure, causing serious injury. Do not exceed specified torque values. Periodically inspect screws and retighten if required.

Frequently check to make sure that all the carrier hardware is properly torqued per these instructions. Check to make sure that the carrier mounting screws are properly tightened and secure the VanMoof Rear Rack to the bicycle frame. Periodically check for any signs of cracking or failure and discontinue use if the rack is damaged.

### Compatibility:

The Front Rack is compatible with the VanMoof S5 & A5.

**Model name:** Front Rack: VTCA-001, Basket & Net: 700-00061

**VanMoof Netherlands B.V & MA Micro Netherlands B.V.**  
Nieuwe Looiersdwarstraat 9, 1017 TZ Amsterdam, Netherlands