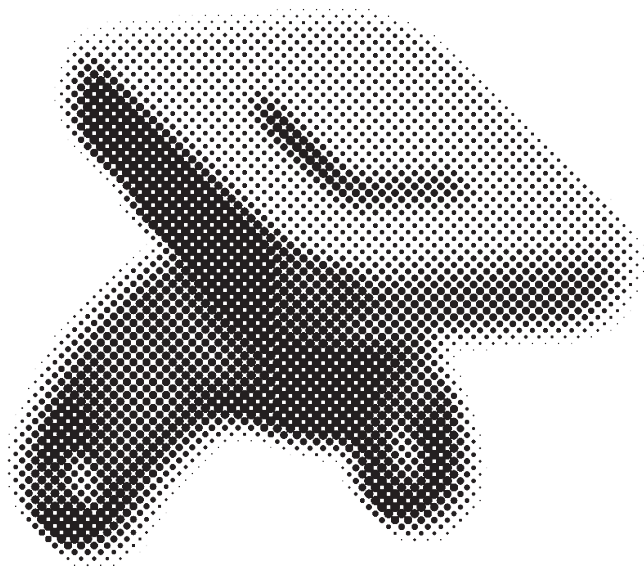
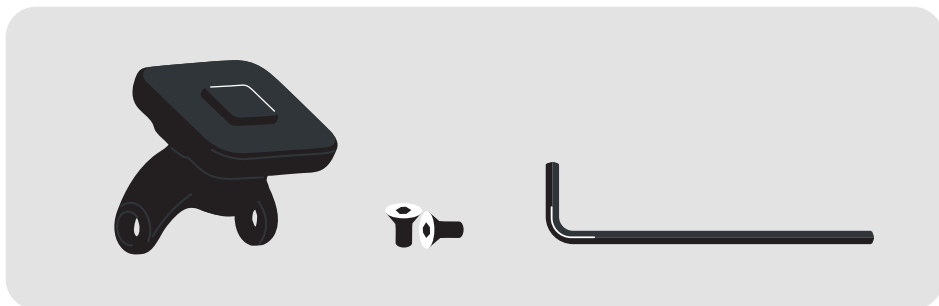


# User Manual

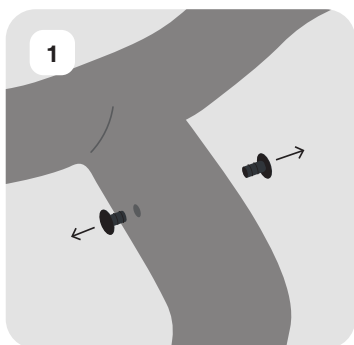
Peak Design x VanMoof  
SlimLink™ phonemount





↑ Tools & parts you'll need :

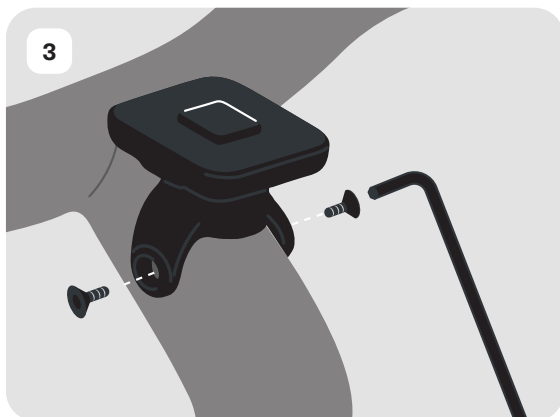
- Allen key N°3 (included in your bike's toolbox)
- Peak Design SlimLink™ phone mount
- Screws (x2)



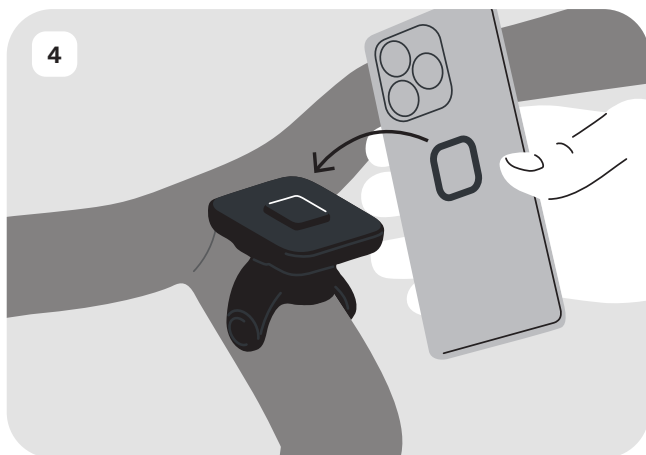
↑ Remove the two rubber covers from the sides of the handlebar.



↑ Place the phonemount on top of the handlebar, make sure the holes on the side are aligned with the holes in the handlebar.



Use Allen key N°3 to tighten the →  
mount onto the handlebar, securing  
it with the included screws.



↑ Scan to get your compatible Peak Design accessory.

↑ Secure your phone with your Peak Design accessory on the phone mount. Make sure it's properly attached and locked in place. Select your preferred orientation—portrait or landscape. The phone can be installed in either mode.



↑ Remove your phone by pressing either button on the sides of the mount.



## IMPORTANT SAFETY INSTRUCTIONS

1. **WARNING:** Always pay attention to road and traffic conditions when riding.
2. **WARNING:** To minimize distraction and ensure the safety of you, as well as other road users, do not use your phone to adjust settings while you are in motion.
3. **WARNING:** Make sure to turn off notifications and text messages before you attach your phone to the phone mount.
4. **WARNING:** Ensure all screws are properly torqued (5Nm).
5. **WARNING:** Go to <https://www.vanmoof.com/terms-and-conditions> to view our Terms and Conditions.

VANMOOF